

Acta Crystallographica Section E

## Structure Reports

Online

ISSN 1600-5368

 4-(3-Fluoroanilino)thieno[2,3-*b*]pyridine-6-carboxylic acid

 Luiz C. S. Pinheiro,<sup>a</sup> Alice M. R. Bernardino,<sup>b</sup>  
 Solange M. S. V. Wardell,<sup>c</sup> James L. Wardell<sup>d‡</sup> and  
 Edward R. T. Tiekink<sup>e\*</sup>
<sup>a</sup>Fundação Oswaldo Cruz, Instituto de Tecnologia em Fármacos, Departamento de Síntese Orgânica, Manguinhos, CEP 21041-250, Rio de Janeiro, RJ, Brazil,

<sup>b</sup>Universidade Federal Fluminense, Instituto de Química, Departamento de Química Orgânica, Programa de Pós-Graduação em Química Orgânica, Campus do Valonguinho, CEP 24210-150, Niterói, RJ, Brazil, <sup>c</sup>CHEMSOL, 1 Harcourt Road, Aberdeen AB15 5NY, Scotland, <sup>d</sup>Centro de Desenvolvimento Tecnológico em Saúde (CDTS), Fundação Oswaldo Cruz (FIOCRUZ), Casa Amarela, Campus de Manguinhos, Av. Brasil 4365, 21040-900 Rio de Janeiro, RJ, Brazil, and

<sup>e</sup>Department of Chemistry, University of Malaya, 50603 Kuala Lumpur, Malaysia  
 Correspondence e-mail: edward.tiekink@gmail.com

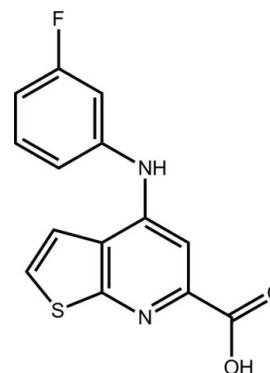
Received 9 June 2012; accepted 15 June 2012

 Key indicators: single-crystal X-ray study;  $T = 120$  K; mean  $\sigma(\text{C}-\text{C}) = 0.003$  Å; disorder in main residue;  $R$  factor = 0.035;  $wR$  factor = 0.087; data-to-parameter ratio = 13.4.

In the title compound,  $\text{C}_{14}\text{H}_9\text{FN}_2\text{O}_2\text{S}$ , the thieno[2,3-*b*]pyridine residue is almost planar (r.m.s. deviation = 0.0194 Å), with the carboxylic acid group [dihedral angle = 11.9 (3)°] and the benzene ring [71.1 (4)°] being twisted out of this plane to different extents. An intramolecular N—H...O(carbonyl) hydrogen bond closes an  $S(6)$  ring. Supramolecular chains along [01 $\bar{1}$ ] mediated by O—H...N(pyridine) hydrogen bonds feature in the crystal. A three-dimensional architecture is completed by  $\pi$ – $\pi$  interactions occurring between the benzene ring and the two rings of the thieno[2,3-*b*]pyridine residue [centroid–centroid distances = 3.6963 (13) and 3.3812 (13) Å]. The F atom is disordered over the two *meta* sites in a near statistical ratio [0.545 (5):0.455 (5)].

## Related literature

For the biological activity of 4-(arylamino)thieno[2,3-*b*]pyridine-5-carboxylic acids, see: Bernardino *et al.* (2007); Pinheiro *et al.* (2008). For the synthesis, see: Leal *et al.* (2008).



## Experimental

## Crystal data

 $\text{C}_{14}\text{H}_9\text{FN}_2\text{O}_2\text{S}$ 
 $M_r = 288.29$ 

 Orthorhombic,  $Pna2_1$ 
 $a = 17.0666$  (6) Å

 $b = 8.7147$  (3) Å

 $c = 7.9931$  (2) Å

 $V = 1188.82$  (7) Å<sup>3</sup>
 $Z = 4$ 

 Mo  $K\alpha$  radiation

 $\mu = 0.29$  mm<sup>-1</sup>
 $T = 120$  K

 $0.66 \times 0.24 \times 0.17$  mm

## Data collection

 Bruker–Nonius Roper CCD camera  
 on  $\kappa$ -goniostat diffractometer

Absorption correction: multi-scan

(SADABS; Sheldrick, 2007)

 $T_{\min} = 0.788$ ,  $T_{\max} = 1.000$ 

10259 measured reflections

2643 independent reflections

 2376 reflections with  $I > 2\sigma(I)$ 
 $R_{\text{int}} = 0.058$ 

## Refinement

 $R[F^2 > 2\sigma(F^2)] = 0.035$ 
 $wR(F^2) = 0.087$ 
 $S = 1.06$ 

2643 reflections

197 parameters

3 restraints

H atoms treated by a mixture of independent and constrained refinement

 $\Delta\rho_{\text{max}} = 0.20$  e Å<sup>-3</sup>
 $\Delta\rho_{\text{min}} = -0.42$  e Å<sup>-3</sup>

Absolute structure: Flack (1983),

1181 Friedel pairs

Flack parameter: 0.15 (9)

Table 1

Hydrogen-bond geometry (Å, °).

$D-H\cdots A$	$D-H$	$H\cdots A$	$D\cdots A$	$D-H\cdots A$
O1—H1o...N1 <sup>i</sup>	0.86 (2)	1.84 (2)	2.681 (2)	167 (3)
N2—H2n...O2	0.88 (2)	1.85 (2)	2.635 (2)	147 (2)

 Symmetry code: (i)  $-x + \frac{1}{2}, y + \frac{1}{2}, z + \frac{1}{2}$ .

Data collection: COLLECT (Hooft, 1998); cell refinement: DENZO (Otwinowski & Minor, 1997) and COLLECT; data reduction: DENZO and COLLECT; program(s) used to solve structure: SHELXS97 (Sheldrick, 2008); program(s) used to refine structure: SHELXL97 (Sheldrick, 2008); molecular graphics: ORTEP-3 (Farrugia, 1997) and DIAMOND (Brandenburg, 2006); software used to prepare material for publication: pubCIF (Westrip, 2010).

The use of the EPSRC X-ray crystallographic service at the University of Southampton, England, and the valuable assistance of the staff there is gratefully acknowledged. JLW acknowledges support from CAPES (Brazil). We also thank the Ministry of Higher Education (Malaysia) for funding

<sup>‡</sup> Additional correspondence author, e-mail: j.wardell@abdn.ac.uk.

structural studies through the High-Impact Research scheme (UM.C/HIR/MOHE/SC/12).

---

Supplementary data and figures for this paper are available from the IUCr electronic archives (Reference: HB6844).

---

## References

- Bernardino, A. M. R., de Azevedo, A. R., Pinheiro, L. C. S., Borges, J. C., Carvalho, V. L., Miranda, M. D., de Meneses, M. D. F., Nascimento, M., Ferreira, D., Rebelo, M. A., Silva, V. A. G. G. & Frugulhetti, I. C. P. P. (2007). *Med. Chem. Res.* **16**, 352–369.
- Brandenburg, K. (2006). *DIAMOND*. Crystal Impact GbR, Bonn, Germany.
- Farrugia, L. J. (1997). *J. Appl. Cryst.* **30**, 565.
- Flack, H. D. (1983). *Acta Cryst.* **A39**, 876–881.
- Hooft, R. W. W. (1998). *COLLECT*. Nonius BV, Delft, The Netherlands.
- Leal, B., Afonso, I. F., Rodrigues, C. R., Abreu, P. A., Garrett, R., Pinheiro, L. C. S., Azevedo, A. R., Borges, J. C., Vegi, P. F., Santos, C. C. C., da Silveira, F. C. A., Cabral, L. M., Frugulhetti, I. C. P. P., Bernardino, A. M. R., Santos, D. O. & Castro, H. C. (2008). *Bioorg. Med. Chem.* **16**, 8196–8204.
- Otwinowski, Z. & Minor, W. (1997). *Methods in Enzymology*, Vol. 276, *Macromolecular Crystallography, Part A*, edited by C. W. Carter Jr & R. M. Sweet, pp. 307–326. New York: Academic Press.
- Pinheiro, L. C. S., Borges, J. C., Oliveira, C. D., Ferreira, V. F., Romeiro, G. A., Marques, I. P., Abreu, P. A., Frugulhetti, I. C. P. P., Rodrigues, C. R., Albuquerque, M. G., Castro, H. C. & Bernardino, A. M. R. (2008). *ARKIVOC*, pp. 77–87.
- Sheldrick, G. M. (2007). *SADABS*. Bruker AXS Inc., Madison, Wisconsin, USA.
- Sheldrick, G. M. (2008). *Acta Cryst.* **A64**, 112–122.
- Westrip, S. P. (2010). *J. Appl. Cryst.* **43**, 920–925.

## supplementary materials

*Acta Cryst.* (2012). E68, o2217–o2218 [doi:10.1107/S1600536812027195]

**4-(3-Fluoroanilino)thieno[2,3-*b*]pyridine-6-carboxylic acid**

**Luiz C. S. Pinheiro, Alice M. R. Bernardino, Solange M. S. V. Wardell, James L. Wardell and Edward R. T. Tiekink**

**Comment**

Among the reported thienopyridine derivatives is a family of 4-(arylamino)thieno[2,3-*b*]pyridine-5-carboxylic acids, whose anti-viral and anti-bacterial activities have been investigated (Leal *et al.*, 2008; Bernardino *et al.*, 2007; Pinheiro *et al.*, 2008). The structure of one of these derivatives, the title compound (I), is now reported.

In (I), Fig. 1, the nine atoms comprising the thieno[2,3-*b*]pyridine fused ring system are planar with a r.m.s. deviation of 0.0194 Å and maximum deviations of 0.0343 (19) and -0.0227 (16) for the C7 and C6 atoms, respectively. The carboxylic acid residue is twisted out of this plane, forming a dihedral angle of 11.9 (3)°, and the terminal benzene ring, which is orientated towards the thienyl ring, is almost orthogonal, the dihedral angle being 71.1 (4)°. There is an intramolecular *N*—*H*⋯*O*(carbonyl) hydrogen bond, Table 1, which closes an *S*(6) loop.

In the crystal packing, supramolecular chains along [0 1 - 1] are formed *via* O—*H*⋯*N*(pyridyl) hydrogen bonds, Fig. 2 and Table 1. These are consolidated into a three-dimensional architecture *via*  $\pi$ — $\pi$  interactions whereby the thieno[2,3-*b*]pyridine residue is straddled by a symmetry related benzene ring [inter-centroid (thienyl⋯benzene) distance = 3.6963 (13) Å, angle of inclination = 1.41 (12)°, and inter-centroid (pyridyl⋯benzene) distance = 3.3812 (13) Å and angle of inclination = 3.25 (11)° for symmetry operation  $-x, 2 - y, -1/2 + z$ ], Fig. 3.

**Experimental**

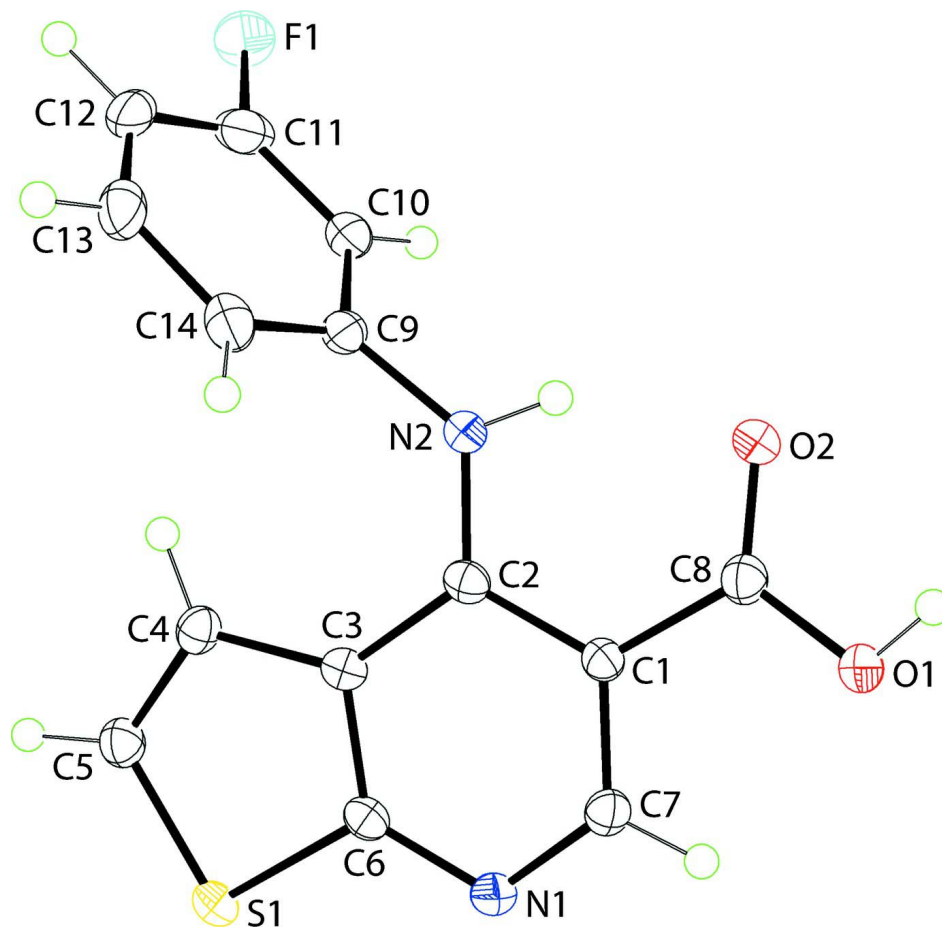
The title compound was prepared as reported (Leal *et al.*, 2008). The dark orange blade used in the structure determination was grown from its toluene/acetonitrile solution.

**Refinement**

The C-bound H atoms were geometrically placed (C—H = 0.95 Å) and refined as riding with  $U_{\text{iso}}(\text{H}) = 1.2U_{\text{eq}}(\text{C})$ . The O- and N-bound H atoms were located from a difference map and refined with distance restraints of O—H = 0.84±0.01 and N—H = 0.88±0.01 Å, and with  $U_{\text{iso}}(\text{H}) = zU_{\text{eq}}(\text{carrier atom})$ ;  $z = 1.5$  for O and  $z = 1.2$  for N. The F1 atom is disordered over two position. Each site was refined with individual anisotropic displacement parameters. The major component refined to a site occupancy factor = 0.545 (5). The (022) reflection was omitted from the final refinement owing to poor agreement.

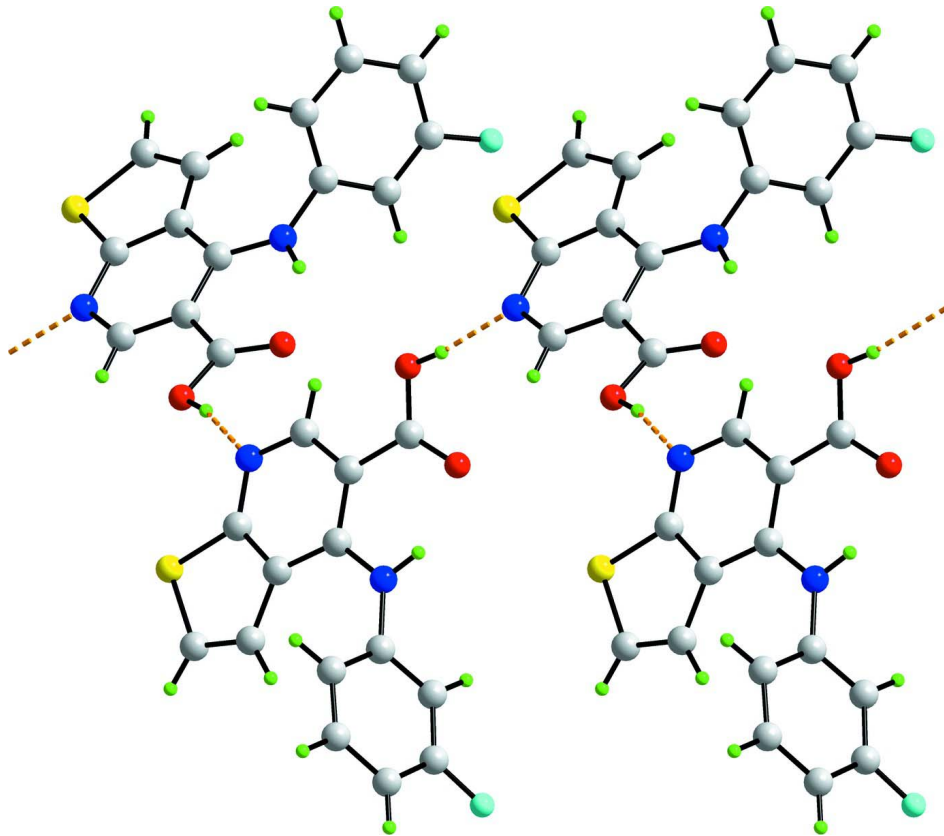
**Computing details**

Data collection: *COLLECT* (Hooft, 1998); cell refinement: *DENZO* (Otwinowski & Minor, 1997) and *COLLECT* (Hooft, 1998); data reduction: *DENZO* (Otwinowski & Minor, 1997) and *COLLECT* (Hooft, 1998); program(s) used to solve structure: *SHELXS97* (Sheldrick, 2008); program(s) used to refine structure: *SHELXL97* (Sheldrick, 2008); molecular graphics: *ORTEP-3* (Farrugia, 1997) and *DIAMOND* (Brandenburg, 2006); software used to prepare material for publication: *publCIF* (Westrip, 2010).



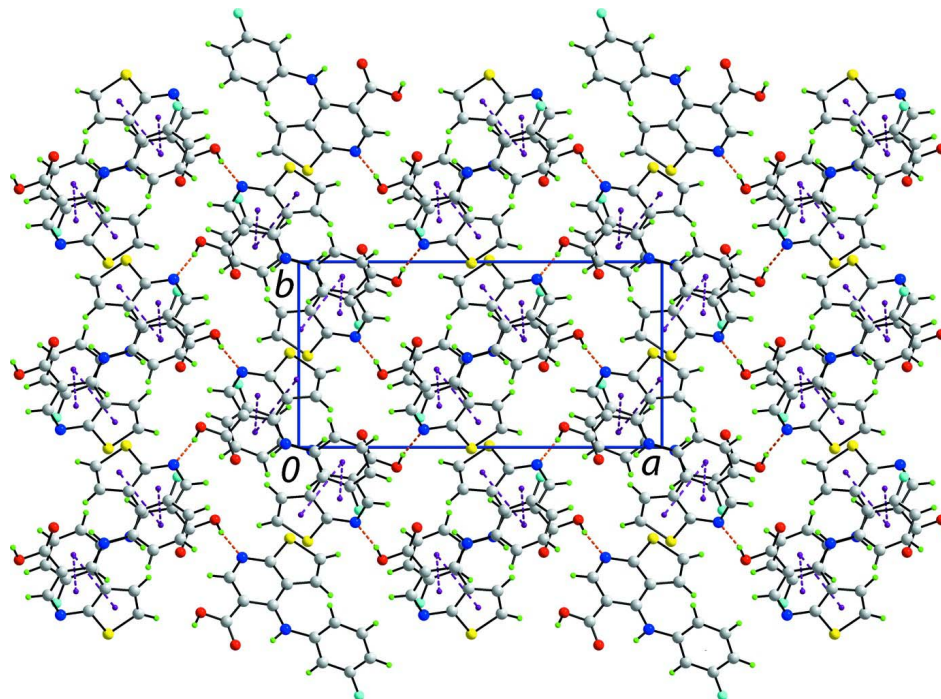
**Figure 1**

The molecular structure of (I) showing displacement ellipsoids at the 50% probability level.



**Figure 2**

A view of the supramolecular chain in (I) sustained by O—H···N (orange dashed lines) hydrogen bonds.



**Figure 3**

A view in projection down the  $c$  axis of the unit-cell contents for (I). The O—H...N and  $\pi$ — $\pi$  interactions are shown as orange and purple dashed lines, respectively.

#### 4-(3-Fluoroanilino)thieno[2,3-*b*]pyridine-6-carboxylic acid

##### Crystal data

$C_{14}H_9FN_2O_2S$

$M_r = 288.29$

Orthorhombic,  $Pna2_1$

Hall symbol:  $P\ 2c\ -2n$

$a = 17.0666\ (6)\ \text{\AA}$

$b = 8.7147\ (3)\ \text{\AA}$

$c = 7.9931\ (2)\ \text{\AA}$

$V = 1188.82\ (7)\ \text{\AA}^3$

$Z = 4$

$F(000) = 592$

$D_x = 1.611\ \text{Mg m}^{-3}$

Mo  $K\alpha$  radiation,  $\lambda = 0.71073\ \text{\AA}$

Cell parameters from 1601 reflections

$\theta = 1.0\text{--}27.5^\circ$

$\mu = 0.29\ \text{mm}^{-1}$

$T = 120\ \text{K}$

Blade, dark-orange

$0.66 \times 0.24 \times 0.17\ \text{mm}$

##### Data collection

Bruker–Nonius Roper CCD camera on  $\kappa$ -goniostat  
diffractometer

Radiation source: Bruker–Nonius FR591  
rotating anode

Graphite monochromator

Detector resolution:  $9.091\ \text{pixels mm}^{-1}$

$\varphi$  &  $\omega$  scans

Absorption correction: multi-scan  
(*SADABS*; Sheldrick, 2007)

$T_{\min} = 0.788$ ,  $T_{\max} = 1.000$

10259 measured reflections

2643 independent reflections

2376 reflections with  $I > 2\sigma(I)$

$R_{\text{int}} = 0.058$

$\theta_{\max} = 27.5^\circ$ ,  $\theta_{\min} = 3.5^\circ$

$h = -22 \rightarrow 22$

$k = -11 \rightarrow 11$

$l = -10 \rightarrow 9$

Refinement

Refinement on  $F^2$

Least-squares matrix: full

$R[F^2 > 2\sigma(F^2)] = 0.035$

$wR(F^2) = 0.087$

$S = 1.06$

2643 reflections

197 parameters

3 restraints

Primary atom site location: structure-invariant  
direct methods

Secondary atom site location: difference Fourier  
map

Hydrogen site location: inferred from  
neighbouring sites

H atoms treated by a mixture of independent  
and constrained refinement

$w = 1/[\sigma^2(F_o^2) + (0.0375P)^2 + 0.2847P]$

where  $P = (F_o^2 + 2F_c^2)/3$

$(\Delta/\sigma)_{\max} < 0.001$

$\Delta\rho_{\max} = 0.20 \text{ e } \text{\AA}^{-3}$

$\Delta\rho_{\min} = -0.42 \text{ e } \text{\AA}^{-3}$

Absolute structure: Flack (1983), 1181 Friedel  
pairs

Flack parameter: 0.15 (9)

Special details

**Geometry.** All s.u.'s (except the s.u. in the dihedral angle between two l.s. planes) are estimated using the full covariance matrix. The cell s.u.'s are taken into account individually in the estimation of s.u.'s in distances, angles and torsion angles; correlations between s.u.'s in cell parameters are only used when they are defined by crystal symmetry. An approximate (isotropic) treatment of cell s.u.'s is used for estimating s.u.'s involving l.s. planes.

**Refinement.** Refinement of  $F^2$  against ALL reflections. The weighted  $R$ -factor  $wR$  and goodness of fit  $S$  are based on  $F^2$ , conventional  $R$ -factors  $R$  are based on  $F$ , with  $F$  set to zero for negative  $F^2$ . The threshold expression of  $F^2 > 2\sigma(F^2)$  is used only for calculating  $R$ -factors(gt) etc. and is not relevant to the choice of reflections for refinement.  $R$ -factors based on  $F^2$  are statistically about twice as large as those based on  $F$ , and  $R$ -factors based on ALL data will be even larger.

Fractional atomic coordinates and isotropic or equivalent isotropic displacement parameters ( $\text{\AA}^2$ )

	<i>x</i>	<i>y</i>	<i>z</i>	$U_{\text{iso}}^*/U_{\text{eq}}$	Occ. (<1)
S1	0.02466 (3)	0.49277 (6)	0.56709 (9)	0.02149 (14)	
O1	0.26956 (9)	0.89190 (18)	1.0209 (2)	0.0246 (4)	
H1O	0.2865 (16)	0.959 (2)	1.090 (3)	0.037*	
O2	0.17443 (8)	1.06688 (18)	1.0208 (2)	0.0254 (4)	
N1	0.15569 (10)	0.5951 (2)	0.7157 (2)	0.0185 (4)	
N2	0.03616 (11)	0.9821 (2)	0.9068 (3)	0.0214 (4)	
H2N	0.0711 (11)	1.041 (3)	0.956 (3)	0.026*	
C1	0.18990 (13)	0.7023 (2)	0.8094 (3)	0.0184 (5)	
H1	0.2445	0.6918	0.8298	0.022*	
C2	0.15232 (12)	0.8288 (2)	0.8800 (2)	0.0161 (4)	
C3	0.07089 (13)	0.8526 (2)	0.8490 (3)	0.0167 (4)	
C4	0.03239 (12)	0.7380 (2)	0.7525 (3)	0.0154 (4)	
C5	-0.04725 (13)	0.7259 (2)	0.6927 (3)	0.0190 (5)	
H5	-0.0872	0.7977	0.7195	0.023*	
C6	-0.05889 (12)	0.6029 (2)	0.5952 (3)	0.0214 (5)	
H6	-0.1081	0.5784	0.5464	0.026*	
C7	0.07779 (12)	0.6170 (2)	0.6923 (3)	0.0172 (4)	
C8	0.19891 (12)	0.9401 (3)	0.9793 (3)	0.0198 (5)	
C9	-0.04436 (13)	1.0256 (3)	0.9067 (3)	0.0197 (5)	
C10	-0.06524 (14)	1.1599 (3)	0.8256 (3)	0.0222 (5)	
H10	-0.0279	1.2153	0.7613	0.027*	
C12	-0.19667 (14)	1.1360 (3)	0.9319 (4)	0.0341 (6)	
H12	-0.2487	1.1741	0.9406	0.041*	
C14	-0.09947 (13)	0.9457 (3)	1.0002 (3)	0.0245 (5)	

H14	-0.0857	0.8531	1.0554	0.029*	
C11	-0.14136 (15)	1.2115 (3)	0.8400 (3)	0.0315 (6)	0.545 (5)
C13	-0.17454 (14)	1.0032 (3)	1.0113 (3)	0.0310 (6)	0.545 (5)
H13	-0.2122	0.9491	1.0761	0.037*	0.545 (5)
F1	-0.16627 (15)	1.3395 (3)	0.7761 (3)	0.0330 (9)	0.545 (5)
C11'	-0.14136 (15)	1.2115 (3)	0.8400 (3)	0.0315 (6)	0.455 (5)
H11	-0.1559	1.3032	0.7838	0.038*	0.455 (5)
C13'	-0.17454 (14)	1.0032 (3)	1.0113 (3)	0.0310 (6)	0.455 (5)
F1'	-0.23113 (18)	0.9534 (4)	1.1023 (4)	0.0392 (12)	0.455 (5)

*Atomic displacement parameters (Å<sup>2</sup>)*

	$U^{11}$	$U^{22}$	$U^{33}$	$U^{12}$	$U^{13}$	$U^{23}$
S1	0.0221 (2)	0.0178 (2)	0.0245 (3)	-0.0018 (2)	-0.0014 (3)	-0.0059 (2)
O1	0.0187 (7)	0.0219 (8)	0.0332 (9)	0.0019 (6)	-0.0077 (6)	-0.0077 (7)
O2	0.0198 (8)	0.0194 (8)	0.0370 (10)	-0.0001 (6)	-0.0014 (7)	-0.0092 (7)
N1	0.0181 (9)	0.0169 (9)	0.0205 (9)	0.0010 (7)	0.0011 (7)	-0.0018 (8)
N2	0.0165 (9)	0.0178 (9)	0.0300 (11)	0.0007 (7)	-0.0026 (8)	-0.0070 (8)
C1	0.0175 (10)	0.0170 (10)	0.0208 (12)	0.0006 (8)	-0.0013 (8)	0.0037 (9)
C2	0.0162 (10)	0.0149 (9)	0.0171 (11)	-0.0008 (8)	-0.0004 (8)	-0.0001 (8)
C3	0.0198 (11)	0.0139 (10)	0.0163 (10)	-0.0010 (8)	0.0016 (8)	0.0019 (9)
C4	0.0194 (10)	0.0147 (10)	0.0123 (10)	0.0002 (8)	0.0006 (8)	0.0015 (8)
C5	0.0172 (10)	0.0201 (11)	0.0197 (11)	0.0003 (8)	-0.0007 (8)	0.0030 (9)
C6	0.0203 (10)	0.0213 (10)	0.0226 (12)	-0.0011 (8)	-0.0030 (9)	-0.0002 (9)
C7	0.0204 (10)	0.0145 (10)	0.0165 (10)	-0.0013 (8)	0.0003 (8)	0.0006 (8)
C8	0.0184 (11)	0.0211 (11)	0.0199 (12)	-0.0006 (9)	-0.0015 (9)	-0.0005 (9)
C9	0.0178 (10)	0.0219 (11)	0.0194 (11)	0.0016 (9)	-0.0033 (8)	-0.0071 (9)
C10	0.0214 (12)	0.0197 (11)	0.0256 (12)	-0.0001 (10)	-0.0029 (9)	-0.0040 (10)
C12	0.0170 (11)	0.0419 (15)	0.0434 (15)	0.0045 (11)	-0.0050 (11)	-0.0252 (13)
C14	0.0249 (12)	0.0257 (11)	0.0230 (12)	-0.0059 (10)	0.0003 (10)	-0.0021 (10)
C11	0.0325 (14)	0.0242 (12)	0.0379 (15)	0.0084 (11)	-0.0111 (12)	-0.0113 (11)
C13	0.0208 (12)	0.0425 (16)	0.0296 (14)	-0.0062 (10)	0.0022 (10)	-0.0162 (12)
F1	0.0327 (16)	0.0212 (14)	0.0452 (18)	0.0071 (12)	-0.0064 (12)	0.0067 (12)
C11'	0.0325 (14)	0.0242 (12)	0.0379 (15)	0.0084 (11)	-0.0111 (12)	-0.0113 (11)
C13'	0.0208 (12)	0.0425 (16)	0.0296 (14)	-0.0062 (10)	0.0022 (10)	-0.0162 (12)
F1'	0.0281 (18)	0.046 (2)	0.044 (2)	-0.0163 (14)	0.0099 (15)	-0.0147 (18)

*Geometric parameters (Å, °)*

S1—C7	1.731 (2)	C6—H6	0.9500
S1—C6	1.733 (2)	C9—C14	1.388 (3)
O1—C8	1.319 (3)	C9—C10	1.384 (3)
O1—H1O	0.852 (10)	C10—C11'	1.380 (3)
O2—C8	1.227 (3)	C10—C11	1.380 (3)
N1—C1	1.332 (3)	C10—H10	0.9500
N1—C7	1.356 (3)	C12—C11'	1.365 (4)
N2—C3	1.356 (3)	C12—C11	1.365 (4)
N2—C9	1.426 (3)	C12—C13'	1.373 (4)
N2—H2N	0.881 (10)	C12—C13	1.373 (4)



C1—C2	1.394 (3)	C12—H12	0.9500
C1—H1	0.9500	C14—C13'	1.378 (3)
C2—C3	1.427 (3)	C14—C13	1.378 (3)
C2—C8	1.484 (3)	C14—H14	0.9500
C3—C4	1.422 (3)	C11—F1	1.298 (4)
C4—C7	1.394 (3)	C13—H13	0.9500
C4—C5	1.445 (3)	C11'—H11	0.9500
C5—C6	1.340 (3)	C13'—F1'	1.284 (4)
C5—H5	0.9500		
C7—S1—C6	90.55 (10)	C11'—C10—C9	118.6 (2)
C8—O1—H10	104.9 (19)	C11—C10—C9	118.6 (2)
C1—N1—C7	114.12 (18)	C11'—C10—H10	120.7
C3—N2—C9	129.99 (18)	C11—C10—H10	120.7
C3—N2—H2N	110.0 (17)	C9—C10—H10	120.7
C9—N2—H2N	119.9 (17)	C11'—C12—C11	0.0 (3)
N1—C1—C2	125.5 (2)	C11'—C12—C13'	117.7 (2)
N1—C1—H1	117.3	C11—C12—C13'	117.7 (2)
C2—C1—H1	117.3	C11'—C12—C13	117.7 (2)
C1—C2—C3	119.5 (2)	C11—C12—C13	117.7 (2)
C1—C2—C8	119.12 (19)	C13'—C12—C13	0.0 (2)
C3—C2—C8	121.30 (19)	C11'—C12—H12	121.1
N2—C3—C4	124.5 (2)	C11—C12—H12	121.1
N2—C3—C2	119.2 (2)	C13'—C12—H12	121.1
C4—C3—C2	116.25 (18)	C13—C12—H12	121.1
C7—C4—C3	117.46 (18)	C9—C14—C13'	118.9 (2)
C7—C4—C5	110.70 (19)	C9—C14—C13	118.9 (2)
C3—C4—C5	131.71 (19)	C13'—C14—C13	0.00 (7)
C6—C5—C4	113.0 (2)	C9—C14—H14	120.6
C6—C5—H5	123.5	C13'—C14—H14	120.6
C4—C5—H5	123.5	C13—C14—H14	120.6
C5—C6—S1	113.36 (17)	F1—C11—C12	113.5 (3)
C5—C6—H6	123.3	F1—C11—C10	123.8 (3)
S1—C6—H6	123.3	C12—C11—C10	122.6 (2)
N1—C7—C4	127.12 (19)	C12—C13—C14	122.1 (2)
N1—C7—S1	120.36 (16)	C12—C13—H13	118.9
C4—C7—S1	112.43 (15)	C14—C13—H13	118.9
O2—C8—O1	122.0 (2)	C12—C11'—C10	122.6 (2)
O2—C8—C2	123.44 (19)	C12—C11'—H11	118.7
O1—C8—C2	114.57 (19)	C10—C11'—H11	118.7
C14—C9—C10	120.1 (2)	F1'—C13'—C12	109.9 (3)
C14—C9—N2	121.3 (2)	F1'—C13'—C14	127.8 (3)
C10—C9—N2	118.2 (2)	C12—C13'—C14	122.1 (2)
C11'—C10—C11	0.0 (2)		
C7—N1—C1—C2	-0.3 (3)	C10—C9—C14—C13'	-0.5 (3)
N1—C1—C2—C3	-1.9 (3)	N2—C9—C14—C13'	172.4 (2)
N1—C1—C2—C8	-178.91 (19)	C10—C9—C14—C13	-0.5 (3)
C9—N2—C3—C4	9.1 (4)	N2—C9—C14—C13	172.4 (2)

C9—N2—C3—C2	-173.2 (2)	C11'—C12—C11—F1	0 (97)
C1—C2—C3—N2	-174.7 (2)	C13'—C12—C11—F1	-176.8 (2)
C8—C2—C3—N2	2.2 (3)	C13—C12—C11—F1	-176.8 (2)
C1—C2—C3—C4	3.1 (3)	C11'—C12—C11—C10	0 (100)
C8—C2—C3—C4	-179.95 (19)	C13'—C12—C11—C10	-0.4 (4)
N2—C3—C4—C7	175.4 (2)	C13—C12—C11—C10	-0.4 (4)
C2—C3—C4—C7	-2.3 (3)	C11'—C10—C11—F1	0 (100)
N2—C3—C4—C5	0.0 (4)	C9—C10—C11—F1	176.5 (3)
C2—C3—C4—C5	-177.7 (2)	C11'—C10—C11—C12	0 (75)
C7—C4—C5—C6	0.2 (3)	C9—C10—C11—C12	0.4 (4)
C3—C4—C5—C6	175.9 (2)	C11'—C12—C13—C14	-0.1 (4)
C4—C5—C6—S1	-0.3 (3)	C11—C12—C13—C14	-0.1 (4)
C7—S1—C6—C5	0.20 (18)	C13'—C12—C13—C14	0 (100)
C1—N1—C7—C4	1.2 (3)	C9—C14—C13—C12	0.6 (4)
C1—N1—C7—S1	177.51 (16)	C13'—C14—C13—C12	0 (100)
C3—C4—C7—N1	0.2 (3)	C11—C12—C11'—C10	0 (100)
C5—C4—C7—N1	176.5 (2)	C13'—C12—C11'—C10	-0.4 (4)
C3—C4—C7—S1	-176.41 (16)	C13—C12—C11'—C10	-0.4 (4)
C5—C4—C7—S1	-0.1 (2)	C11—C10—C11'—C12	0 (75)
C6—S1—C7—N1	-176.90 (18)	C9—C10—C11'—C12	0.4 (4)
C6—S1—C7—C4	-0.07 (17)	C11'—C12—C13'—F1'	174.9 (3)
C1—C2—C8—O2	166.8 (2)	C11—C12—C13'—F1'	174.9 (3)
C3—C2—C8—O2	-10.2 (3)	C13—C12—C13'—F1'	0 (59)
C1—C2—C8—O1	-13.5 (3)	C11'—C12—C13'—C14	-0.1 (4)
C3—C2—C8—O1	169.52 (19)	C11—C12—C13'—C14	-0.1 (4)
C3—N2—C9—C14	65.4 (4)	C13—C12—C13'—C14	0 (100)
C3—N2—C9—C10	-121.5 (3)	C9—C14—C13'—F1'	-173.6 (3)
C14—C9—C10—C11'	0.0 (3)	C13—C14—C13'—F1'	0 (79)
N2—C9—C10—C11'	-173.1 (2)	C9—C14—C13'—C12	0.6 (4)
C14—C9—C10—C11	0.0 (3)	C13—C14—C13'—C12	0 (100)
N2—C9—C10—C11	-173.1 (2)		

Hydrogen-bond geometry (Å, °)

<i>D</i> —H... <i>A</i>	<i>D</i> —H	H... <i>A</i>	<i>D</i> ... <i>A</i>	<i>D</i> —H... <i>A</i>
O1—H1o...N1 <sup>i</sup>	0.86 (2)	1.84 (2)	2.681 (2)	167 (3)
N2—H2n...O2	0.88 (2)	1.85 (2)	2.635 (2)	147 (2)

Symmetry code: (i)  $-x+1/2, y+1/2, z+1/2$ .